

MATERIAL CATALOGUE

2026 - 2027



GEBE – ROPE OPTIONS



BLACK & SILVER



DARK SF JUTE



FOREST GREEN



SAGE GREEN



PVC CREAM & BEIGE



PVC CREAM



PLATINUM COCOA



STEEL BLUE (RED6-0008-OLEFIN-NEW SELECTION)



JORDAN BEIGE



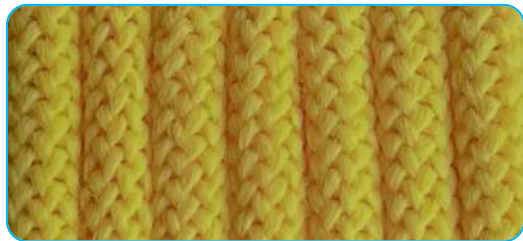
LAVA GREY



LIGHT GREY



CHOCOLATE



LIGHT YELLOW (ON ORDER BASIS ONLY:
60-DAY MINIMUM DELIVERY TIME AFTER
PLACING THE ORDER)

Note: All material images shown are for reference only; final product appearance may vary based on actual production specifications.

GEBE – WICKER OPTIONS



JAWA BROWN – 6MM



ARABICA – 7MM



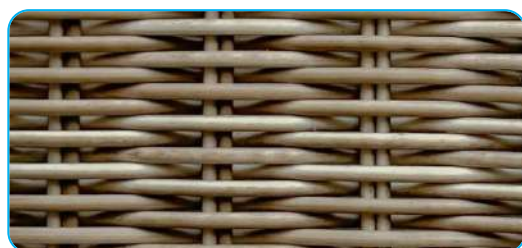
WHITE – 6MM



WHITEWASH – 6MM



WHITE RIBBED – 3MM



SEASHELL – 3MM



CAPPUCCINO – 6MM



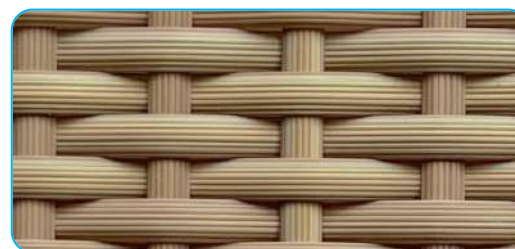
CAPPUCCINO – 2.2 MM



CAPPUCCINO TWISTED – 6MM



GREY MARBLE – 8MM



HONEY LITE – 6MM



HONEY RIBBED – 2.2 MM



MOCCACHINO – 7MM



SEASHELL – 7MM



BLACK – 6MM



GRAPHITE BLACK – 6MM

Note: All material images shown are for reference only; final product appearance may vary based on actual production specifications.

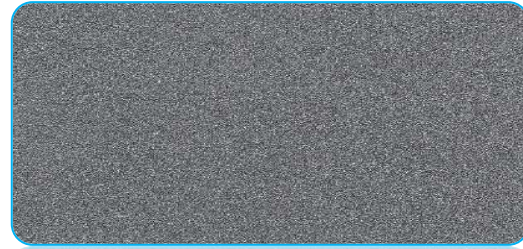
GEBE – POWDER COAT OPTIONS



A7M07146



BAKU TEXTURE



CONCRETE GREY



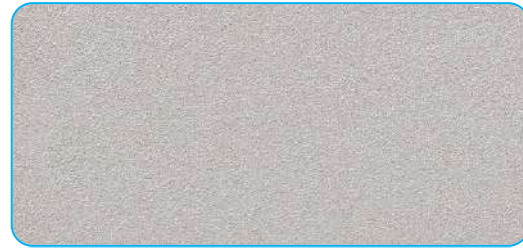
LIMESTONE



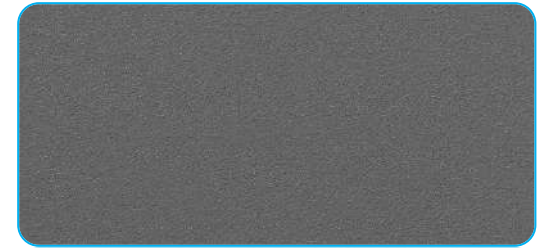
MATT BLACK



MATT GREY



PORTLAND



SAND GREY



SPARKLE WHITE



STEEL BRONZE



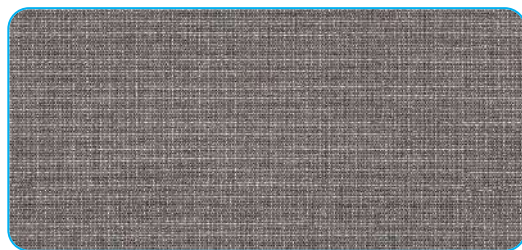
TASILAQ SABLE

Note: All material images shown are for reference only; final product appearance may vary based on actual production specifications.

GEBE – FABRIC OPTIONS



S- PLAY TEAK



S- BLISS SMOKE



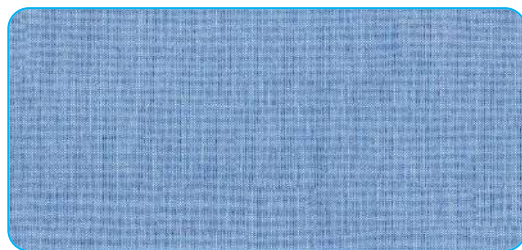
S- SPECTRUM PEACOCK



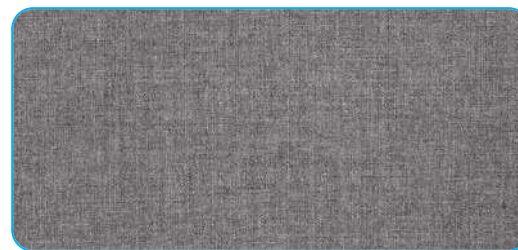
S- SPECTRUM EGGSHELL



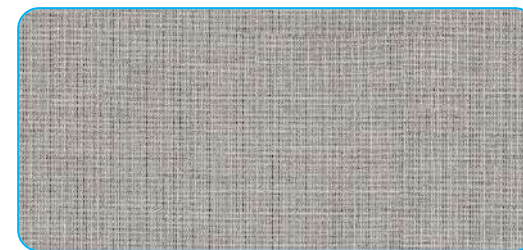
S- CAST ASH



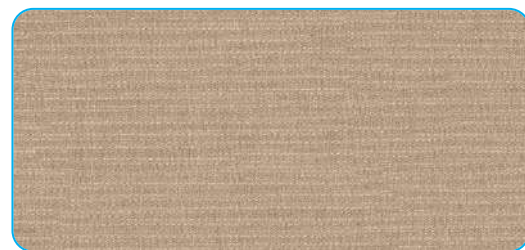
S- CAST OCEAN



S- CAST SLATE



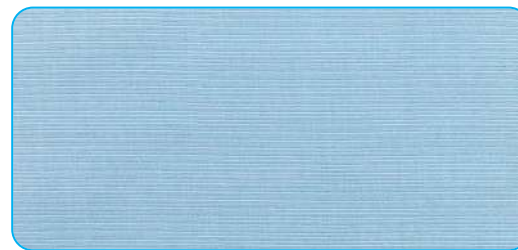
S- CAST SILVER



S-REMIX CAMEL



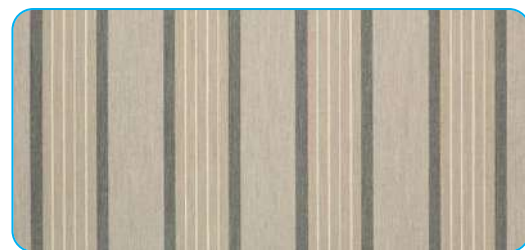
S- CANVAS SUNFLOWER



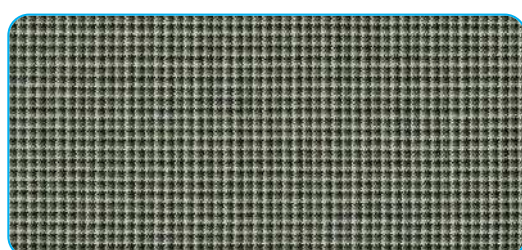
S- CANVAS AIRBLUE



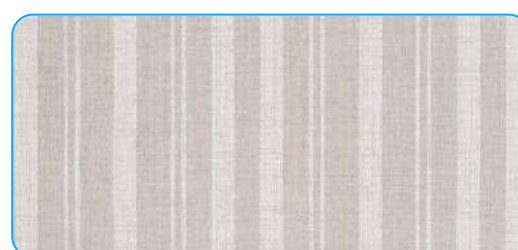
S- CANVAS TAUPE



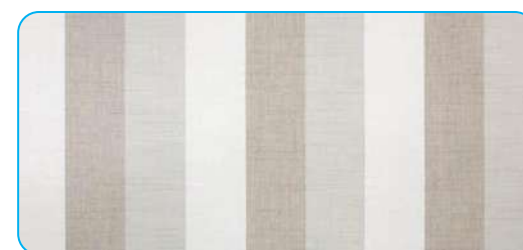
S- COVE PEBBLE



S- LORE MOSS



S- TRANQUIL LINEN



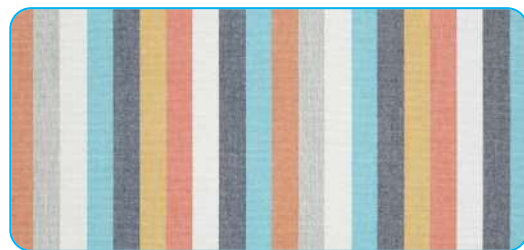
S- DIRECTION LINEN

Note: All material images shown are for reference only; final product appearance may vary based on actual production specifications.

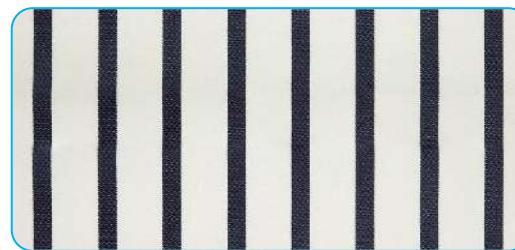
GEBE – FABRIC OPTIONS



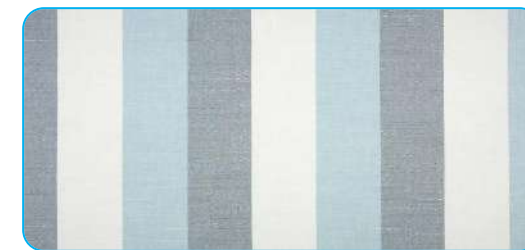
S- SAIL AWAY DENIM



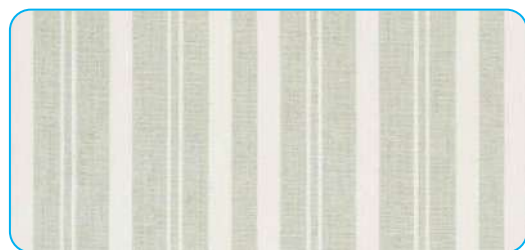
S- SURROUND SUNRISE



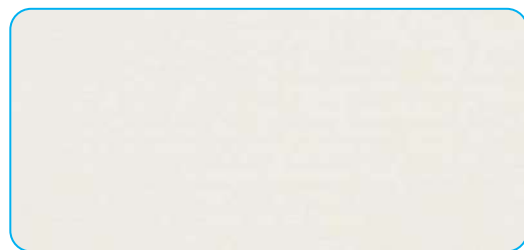
S- LIDO INDIGO



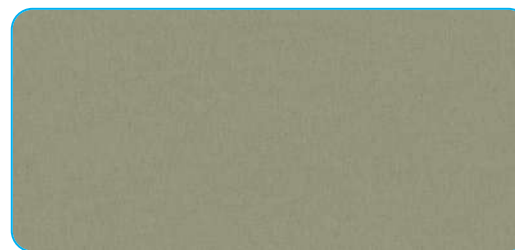
S- DIRECTION DEW



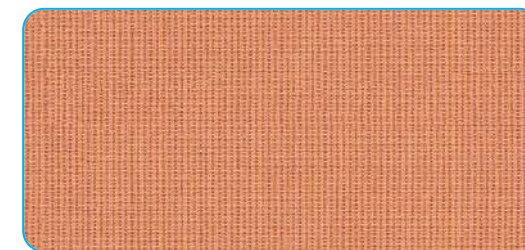
S- TRANQUIL SEIGE



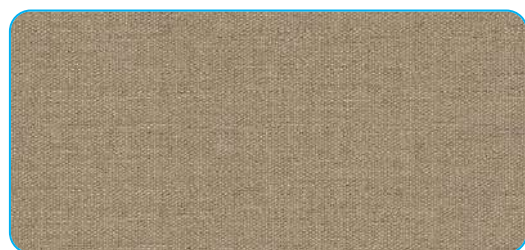
S- SOLIDS NATURAL



S- SOLIDS ALMOND



S- SOLIDS CORAL



S- SOLIDS HEATHER BEIGE



S- SOLIDS LIN



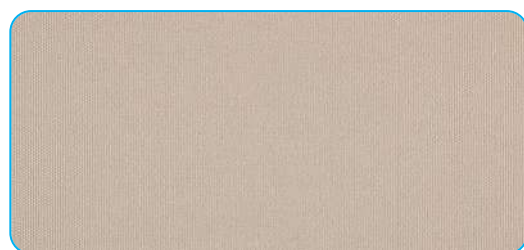
S- SOLIDS PINEA



A- FLAME MARFIL



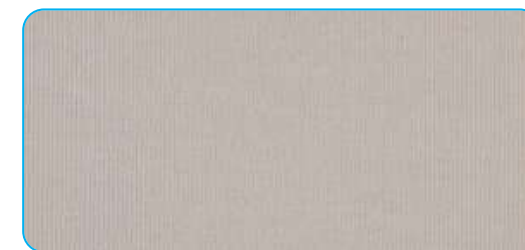
A- LINES INTEGRAL



A- LISO AVENA



A- LISO AMRILA



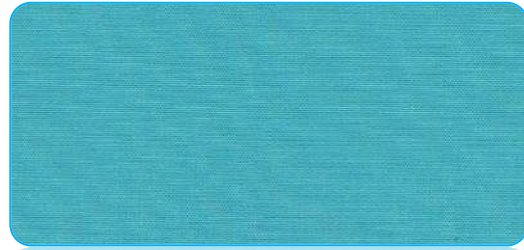
A- LISO MARMOL

Note: All material images shown are for reference only; final product appearance may vary based on actual production specifications.

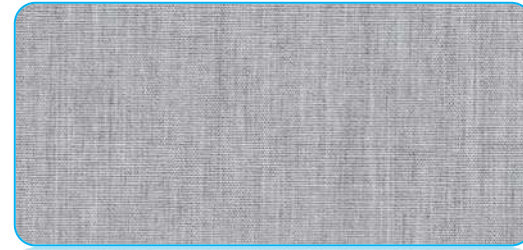
GEBE – FABRIC OPTIONS



A- LISO MARFIL



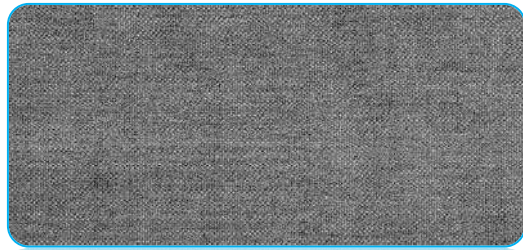
A- LISO TURKIS



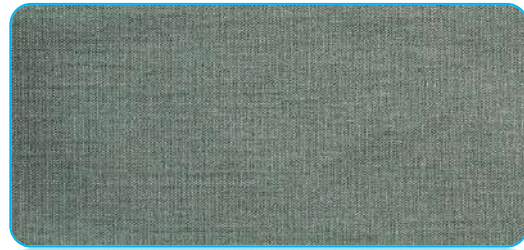
A- LISO PIEDRA



A- LINES PIEDRA



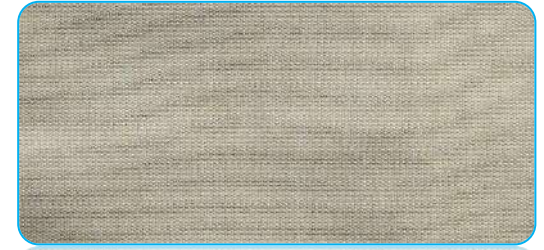
G- CHINE



G- MINT CHINE



G- BOTTLE GREEN



G- BEIGE PENTO



G- LEMON



G- SKY BLUE CHINE



G- FANTASIA CHOCO

Note: All material images shown are for reference only; final product appearance may vary based on actual production specifications.

GEBE – FABRIC OPTIONS FOR THROW PILLOW



S- LIVELY PARCHMENT



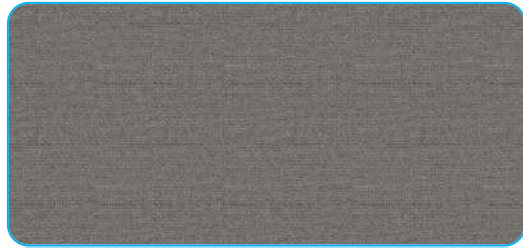
S- PLATFORM CLOUD



S- INFUSED GEM



S- VIOLETTA BALTIC



S- SORENTO CADET GREY



S- CAPRISIO NAVY



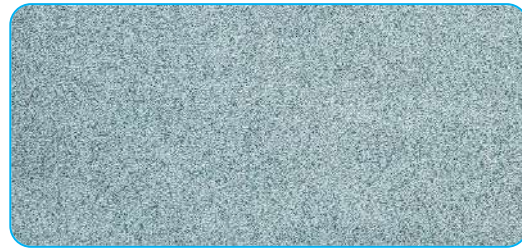
A- CHEVIOT TERRA



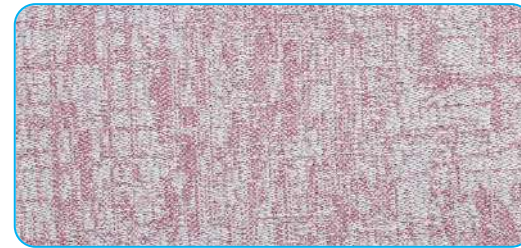
A- SENDA OLIVIA



A- ARTISIAN MINERAL

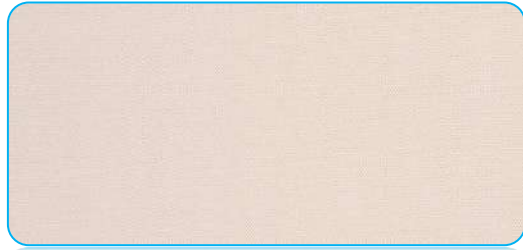


G- GRINTA VERDE

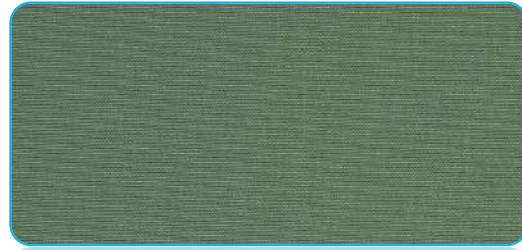


G- ABSTRACT ROSSO

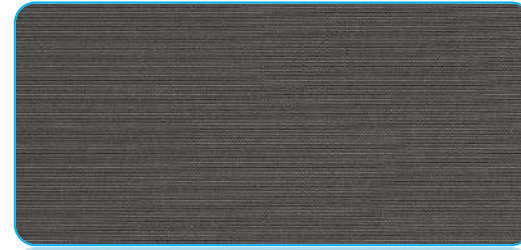
GEBE – FABRIC OPTIONS FOR UMBRELLA



AS- MARFIL (2143)



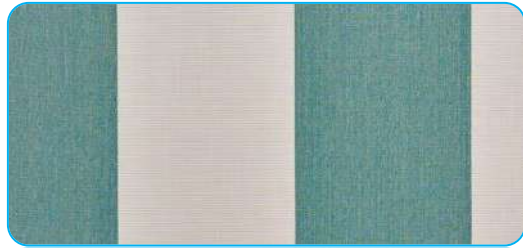
AS- FRESH (2097)



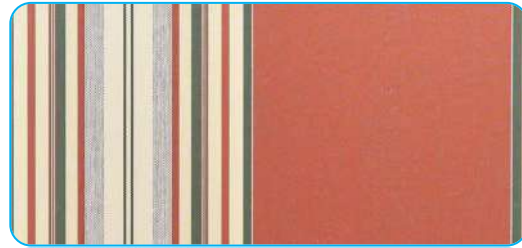
AS- BASALTO (2327)



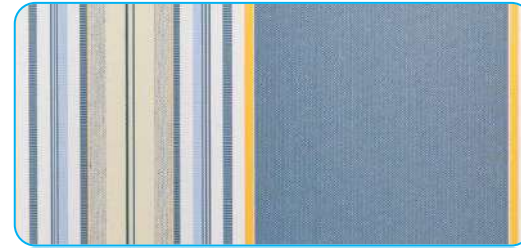
SD- DUNE (0681)



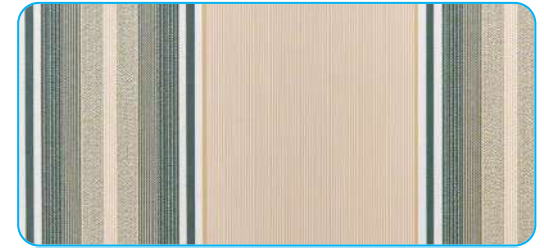
AS- LAGOON- X (1477)



AS- JAMAICA (2701)



AS- MIAMI (2702)



AS- PARMA (2207)

GEBE – HPL OPTIONS



CHAMPAGNE GOLD (E0-104)



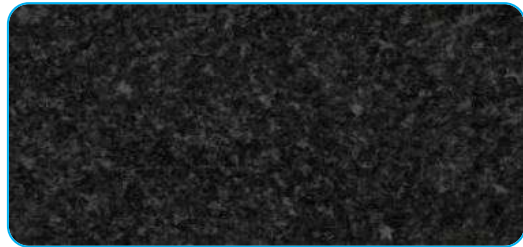
SPECTRA GREY SPECTRA (E0-111)



BURMA TEAK (E0-813)



DARK FOREST (E0-809)

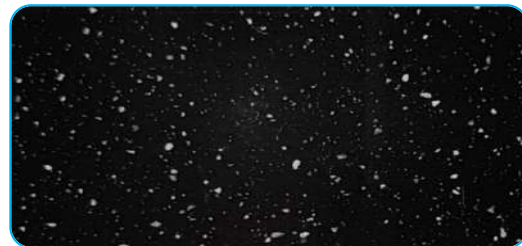


BLACK IMPERIAL (E0-903)

GEBE – ACRYLIC OPTIONS



TERRAIN (1378L)



VOLCANO (181L)



LIGHT SAND (679L)



CRYSTAL WHITE (180L)



LAVA (183L)

Note: All material images shown are for reference only; final product appearance may vary based on actual production specifications.

GEBE – NFC (NATURAL FIBRE COMPOSITE) OPTIONS



OAK



CHESTNUT



WALNUT



BLACK

All the above materials are available in 12mm and 18mm.

GEBE – GLASS TOP OPTIONS



CLEAR GLASS



TINTED GLASS

Clear glass (toughened) available in 8 mm, while tinted glass (toughened) is available in 10 mm.

GEBE – MATERIAL SPECIFICATIONS

GEBE – ALUMINIUM

- High-grade T5 & T6 aluminium for strength, durability, and long life
- Rust-proof & corrosion-resistant ideal for coastal and desert climates
- Lightweight yet sturdy for easy movement and everyday use
- UV-resistant coating premium Interpon finish with smooth, refined texture no fading under harsh sunlight
- Built for extreme outdoor conditions with minimal maintenance

GEBE – ROPE MATERIAL

- UV-protected for long-lasting outdoor performance
- High strength, tensile tested up to 314 kg
- Fire-retardant for enhanced safety
- Variable rope thickness to suit different designs
- Anti-bacterial for improved hygiene
- Eco-friendly and fully recyclable
- Quick-drying for all-weather usability
- Backed by a 3-year warranty

GEBE – WICKER MATERIAL

- Premium UV-resistant wicker for long-lasting outdoor use
- Wide range of natural cane finishes
- Withstands extreme temperatures (-35°C to +65°C)
- Fire-retardant and highly durable
- Strong, stable build with high density and thermal resistance

GEBE – POWDER COAT

- High-quality finish for a smooth and durable surface
- 60–80 micron coating thickness for enhanced protection
- Excellent resistance to corrosion, weather, and UV exposure
- Improved scratch resistance and long-lasting color
- Uniform, premium finish across all components
- Eco-friendly coating with low VOC emissions

GEBE – FABRIC

- Solution-dyed acrylic fabric with water-repellent properties
- Zippered covers for easy removal and washing
- Breathable fabric for sweat-free seating over long durations
- Resistant to stains from coffee, beverages, soup, and wine
- Long-lasting color with up to 5 years fade resistance under sunlight

GEBE – HPL TOP

- Highly durable surface resistant to scratches, impact, and abrasion
- Weather-resistant for reliable outdoor performance in all conditions
- UV-resistant to maintain color and finish under sunlight
- Heat and fire resistant, minimizing warping under high temperatures
- Hygienic, non-porous surface that is easy to clean and maintain
- Wide range of designs including wood, stone, solid colors, and patterns

GEBE – ACRYLIC TOP MATERIAL

- High-quality cast acrylic (PMMA) for superior clarity and finish
- Smooth, high-gloss surface with uniform color consistency
- UV-resistant to prevent discoloration under sunlight
- Weather-resistant for reliable outdoor performance
- Lightweight yet rigid, about 50% lighter than glass
- High impact resistance, stronger than conventional glass
- Non-porous, scratch-resistant surface for easy maintenance
- Easily machinable and thermoformable for versatile designs
- Excellent color stability with long-lasting finish

GEBE – RELWOOD MATERIAL

- High-density engineered wood for superior strength and load-bearing capacity
- Uniform structure with no knots, cracks, or warping
- Moisture-resistant for reliable all-weather performance
- Termite and borer resistant for long-lasting durability
- Smooth surface ideal for lamination and polishing
- Eco-friendly with low formaldehyde emissions

GEBE – GLASS TOP

- Premium toughened glass for enhanced strength and safety
- Available in 8 mm (clear) and 10 mm (tinted) options
- Smooth, refined surface for a clean and elegant look
- High resistance to everyday wear and impact
- Non-porous surface for easy cleaning and maintenance
- Weather-resistant and suitable for indoor and outdoor use
- Maintains clarity and shine over time without discoloration

THANK YOU

Contact Us



+91-9877478110



care@damsungroup.com



www.instagram.com/gebeindia

Visit Us



Headquarter Address :
5th Floor,
Surya Commercial Complex,
Ferozepur Road,
Opposite PAU Gate Number 1,
Ludhiana, Punjab -141001, India



Manufacturing Unit Address :
28, RK Warehouse,
Malerkotla Road,
Village Kaind, Kaind Ludhiana,
Punjab - 141116, India



www.gebeluxe.com